



Wanmei Dental Lab

Catalog of Products

www.wmdental lab. com

Contents

P01	Company Profile	P09	Partial Framework
P02	All Ceramic Restorations	P10	Flexible Denture
P03	IPS eMax Press Restorations	P11	Acrylic Denture
P04	Implant Restorations	P12	Orthodontic
P06	Porcelain Fused on Metal	P14	Temporary Crown
P07	Full Metal Restorations	P15	3D Printing Model
P08	Diagnostic Wax-up	P16	Shipping and Turnaround Time Schedule



Company Profile

Wanmei dental lab established in 1992, with more than 30 years of experience in restorative dentistry. We are a full-service dental laboratory in Shenzhen China, with nearly 100 experienced technicians producing top-quality restorations at affordable prices. Wanmei dental lab starts its dental outsourcing service in 2008 and has registered with the FDA. You can be assured that all of your cases are made by FDA registered and CE certificate safe materials.

We take pride in meeting our customer's requirements with the highest quality products, exceptional service, reasonable price, on-time delivery, and flexible payment term.

Every one of the 100 technicians is highly skilled in their respective areas. Our training programs and Quality Control procedures are personally supervised by our Chief Technical Officer, Liao, with over 20 years of dental laboratory experience, specialize in a full range of aesthetic restoration.

All Ceramic Restorations



- Aidite zir.
- Wieland zir.
- Segamax zir.
- UPCERA TT zi.
- Multilayer color zir



BENEFITS:

- Metal Free and Durability
- Virtually Chip-proof (up to 1200 MPa)
- Milling by 5 axis machine.
- Five different zirconium restoration types we provide.
- Designed and milled using CAD / CAM technology.
- Life-time warranty for full-contour zirconia crown.
- Perfect biocompatibility, No stimulation to gum tissue.

- Full Coutour Zirconia
- Layered Porcelain zirconia
- Multilayer color Zirconia



Highly Recommended

Processing Time: 3-5 days in Lab.



Address: 5/F, Building3, Goldstar Industrial Park,
Jian'an Road, Fuhai Street, Bao'an District, Shenzhen, China

Website: www.wmdentallab.com
E-mail: info@wmdentallab.com

IPS eMax Press Restorations



Veneer



Inlay & Onlay



Crown & Bridge



Processing Time: 3-5 days in Lab.

BENEFITS:

- High Esthetic, Only 400 Mpa
- Perfect esthetics, MO HO LT HT
- No Blue shade under the special light
- The rigidity and abrasion is similar to natural teeth.



Address: 5/F, Building3, Goldstar Industrial Park,
Jian'an Road, Fuhai Street, Bao'an District, Shenzhen, China

Website: www.wmdentallab.com
E-mail: info@wmdentallab.com

Implant Restorations

BENEFITS:

- Implant Restorations:
- Using the medical implant surgery
- Maximum Function renewing
- Protect the adjacent teeth
- Comfortable and hygienic
- Good retention and beautiful

Ti base Zirconia Custom Abutments



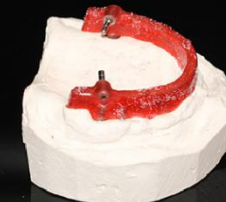
Malo Bridge Implant



Titanium Custom Abutments



Implant Bar



- Ti Base + Zirconia Abutment + Crown
- Cast Abutment + Crown
- Porcelain Fused on Cast Abutment
- Titanium Custom Abutment + Crown

Implant Accessories

- Ti base
- Cast abutment accessories
- Analog
- 3D analog
- Composite abutment
- Original abutment

Porcelain Fused on Metal

1. Porcelain Fused on Precious Alloy

Material	Name	Brand	Components	CE No
Argedent Y73	High Noble Yellow Gold	Argen, US	Au 73.8%, Pt 8.5%, Pd 5.4%, Ag 8.89%	0086
Argedent 90	High Noble Yellow Gold	Argen, US	Au 89.5%, Pt 5.8%, Pd 1.6%, Ag 1.2%	0197
Noblerown NF	Semi precious	Argen, US	Pd 25%, Co 42.75%, Mo 12%, Cr 20%	0197
Argedent Euro	High Noble White Gold	Argen, US	Au 40%, Pd 39.4%, Ag 10%	0197
Ceramic Powder	VITA VMK95	VITA, DE		0124

BENEFITS:

- Good aesthetics appearance
- Nice biocompatibility, flexible elongation
- Prevention for gingiva's discoloration and allergic response
- Precious metal Casting first, Oxides



2. Porcelain Fused on Non-Precious Alloy

Material	Name	Brand	Components	CE No
Non Precious	Argeloy N.P. Supreme	Argen, US	Co 61%, Cr 27%, Mo 6%, W 5%	0086
Non precious	D.sign 30	Ivoclar Vivadent, LI	Co 60.2% Cr30.1%	0197
Non Precious	Wironbond 280	BEGO, Germany	Co 60%, Cr 25%, Mo 4.8%, W 6.2%	0197
Ceramic Powder	VITA VMK 95	VITA, DE		0124

BENEFITS:

- Nickel and Beryllium Free
- Good biocompatibility

Processing Time: 3-5 days in Lab.

Full Metal Restorations



BENEFITS:

- Not easy to crack
- Bear more bite pressure
- Cheaper than PFM restorations
- Less abrasion when used
- Not more preparation on teeth



Material	Name	Brand	Components	CE No
Non Precious	Argeloy N.P. Supreme	Argen, US	Co 61%, Cr 27%, Mo 6%, W 5%	0086
Lower Noble Rich Yellow Gold	Argenco Y+	Argen, US	Au 2%, Pd 34.9%, Ag 30%	0197
High Noble Yellow Gold	Argendent 90	Argen, US	Au 89.5%, Pt 5.8%, Pd 1.6%	0197

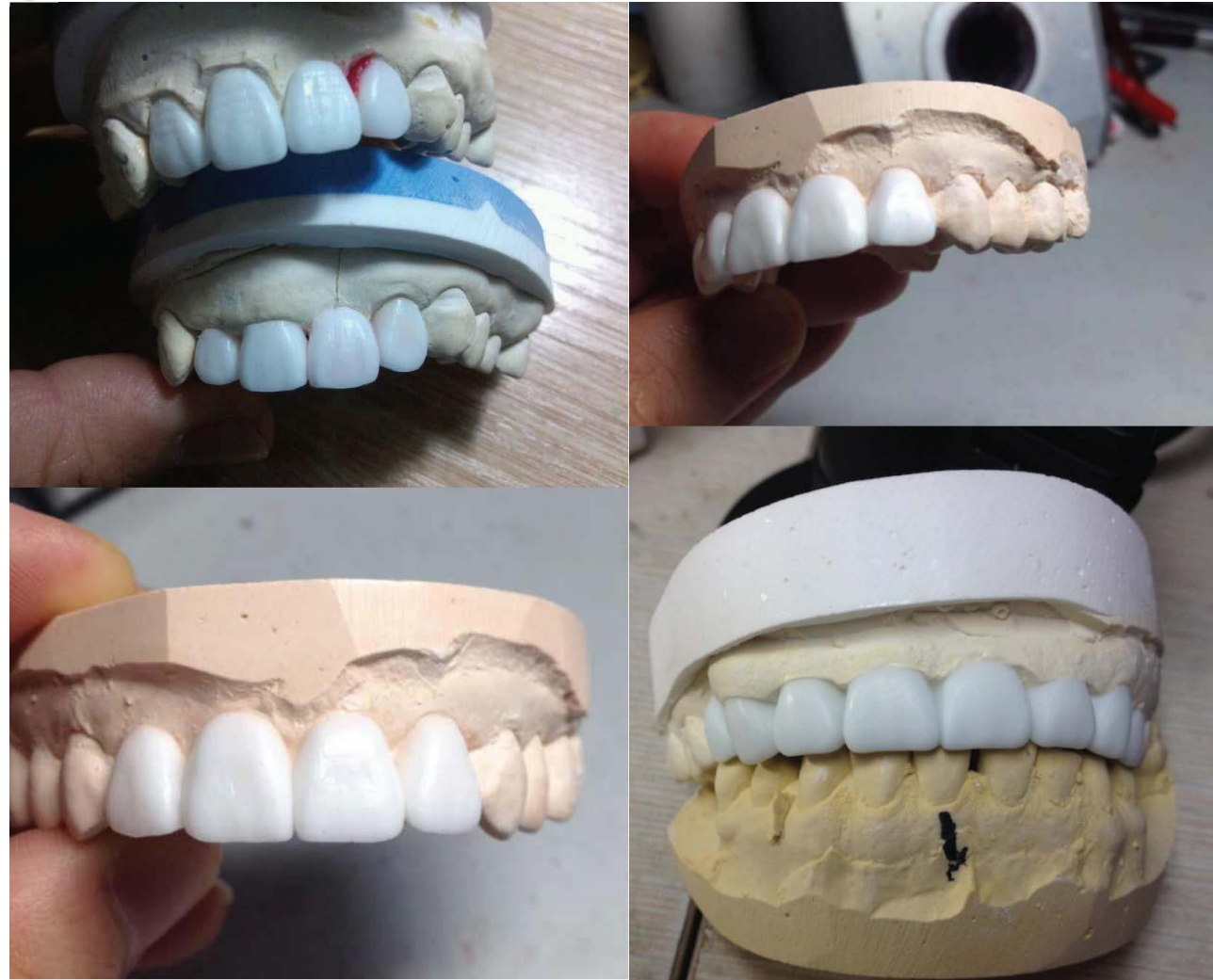
Processing Time: 2-3 days in Lab.

Address: 5/F, Building3, Goldstar Industrial Park,
Jian'an Road, Fuhai Street, Bao'an District, Shenzhen, China

Website: www.wmdentallab.com
E-mail: info@wmdentallab.com

Diagnostic Wax-up

Diagnostic Wax-up are a valuable tool for smile design. It gives the patient an accurate preview of his or her finished case.



Processing Time: 2-3 days in Lab.

Partial Framework

BENEFITS:

- High-Purity Alloy
- Anti-bacterial stripe, anti-shading
- With gold alloy property with resistance of heat corrosion
- Having the function of anti-oxidation
- Long durability and good biocompatibility

- Framework Only
- Teeth Setup
- Try in
- Finish

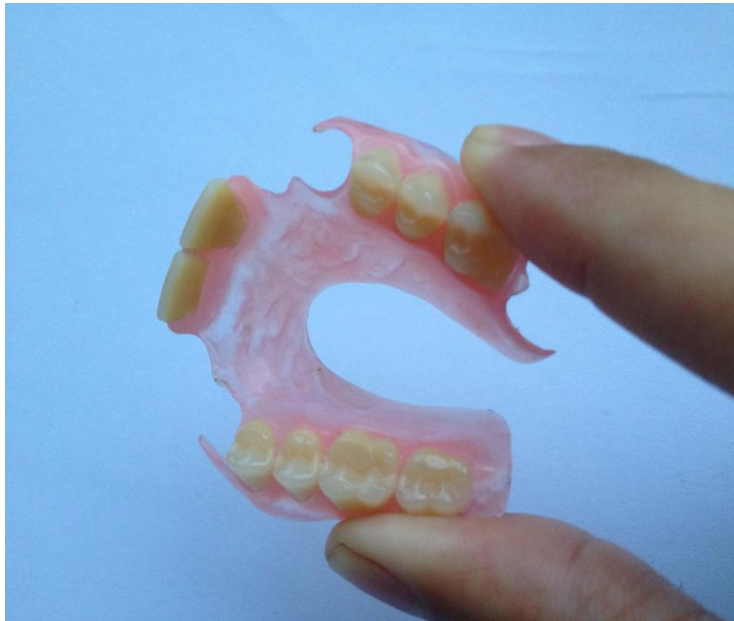
Material	Name	Brand	Components	CE No
Vitallium 2000	Vitallium 2000	Dentsply	Co 63.1%, Cr 28.5%	ISO 22674
Vitallium 2000 plus	Vitallium 2000 Plus	Dentsply	Co 63.4%, Cr 29%	ISO 22674
Non-precious (Co Cr)	Argeloy N.P. Partial	Argen	Co 61%, Cr 26%	0483
Non-Precious (Co Cr)	Wirobond C	Bego, DE	Co 61%, Cr 26%	0044

Vitallium 2000 Plus



Processing Time: 4-5 days in Lab.

Flexible Denture



BENEFITS:

- Flexible base, and the same shade with the gum tissue
- No metal clasps, no partial alloy framework
- Much light, comfortable and esthetics, feel nothing in the mouth
- Better than partial denture, Expensive than partial denture
- Easy take down by yourself.

Material	Name	Brand	CE No	Shade Available
Base	Luctione FRS	Dentsply	0123	(normal pink ,dark pink, light pink, Mehary, Light Merary, Dark Mehary)
Base	Valplast	Valplast		
Base	TCS	TCS		
Teeth	Ivoclar SM	IVOCLAR VIVADENT, LI	0123	
Teeth	Invoidlar SR otrhotyp	IVOCLAR VIVADENT, LI	0123	



Processing Time: 3-5 days in Lab.

Address: 5/F, Building3, Goldstar Industrial Park,
Jian'an Road, Fuhai Street, Bao'anDistrict, Shenzhen, China

Website: www.wmdentallab.com
E-mail: info@wmdentallab.com

Acrylic Denture

- Full Denture
- Partial Denture



BENEFITS:

- With the vacuum absorbability to fix the denture in the mouth
- Showing a comfortable sense of natural teeth
- Economical set, easy clean, much better for the old
- Tissue color base integrates with gingiva tissue perfectly
-

Processing Time: 3-5 days in Lab.

Material	Name	Brand	CE No
Base	Probase	IVOCLAR VIVADENT, LI	0123
Base	Mehary, Light Merary, Dark Mehary	Dentsply	
Base	Luciton 199	Dentsply	
Teeth	Ivoclar SM	IVOCLAR VIVADENT, LI	0123
Teeth	Invoiclar SR orthotyp	IVOCLAR VIVADENT, LI	0123
Teeth	Cosmo HXL	Dentsply	ISO 3336:1993

Address: 5/F, Building3, Goldstar Industrial Park,
Jian'an Road, Fuhai Street, Bao'an District, Shenzhen, China

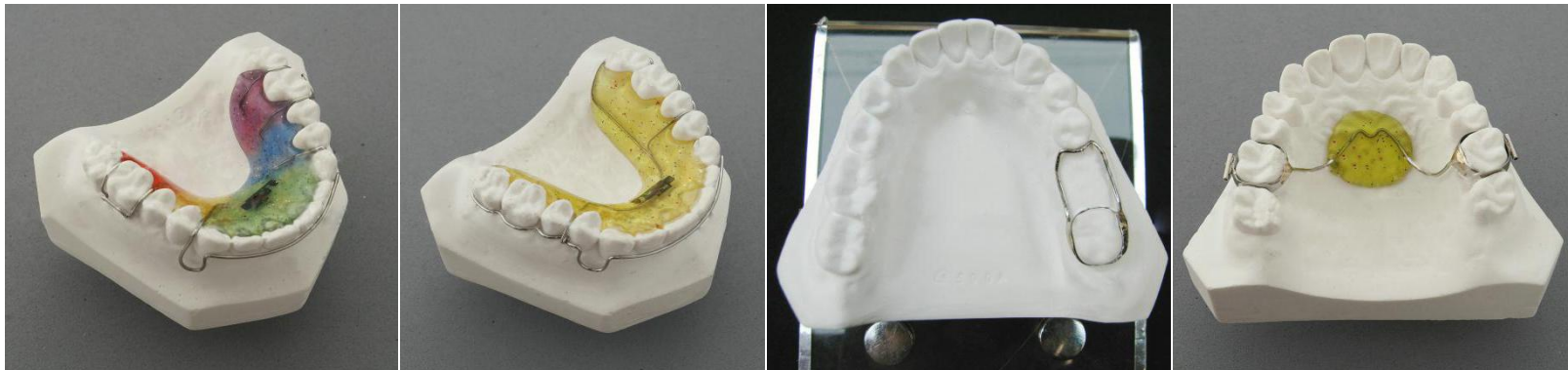
Website: www.wmdentallab.com
E-mail: info@wmdentallab.com

Orthodontic

Material	Name	Brand	CE No	Material	Name	Brand	CE No
Orthocyl EQ	Dentaurum Polymethyl methacrylate	Dentaurum, DE	0483	Wire band for Orthodontic Device	Remanium	Dentaurum, DE	0483
Orthocyl EQ	Dentaurum Polymethyl methacrylate	Dentaurum, DE	0483	Cold curing powder for orthodontic	Orthocyl EQ	Dentaurum, DE	0483

BENEFITS:

- Eliminate tooth grinding when sleeping
- Solve the tight bite problem





Temporary Crown



BENEFITS:

- Strength and Stability, High Luster Polishability, Perfect Fits, Excellent
- Machinability, Absolute Biocompatibility, Stainable Available Colors: Clear, White, Pre
- Shaded- A1, A2, A3, A4, B/C



Property	Unit	SagePMMA Value
Tensile Strength	Mpa	> 75
Biaxial Flexure Strength	Mpa	> 120
Elongation	%	3
Refractive Index	-	1.49
Water Absorption	µg/mm ³	0.3~0.4%
Composition	Polymethyl Methacrylate	



Address: 5/F, Building3, Goldstar Industrial Park,
Jian'an Road, Fuhai Street, Bao'an District, Shenzhen, China

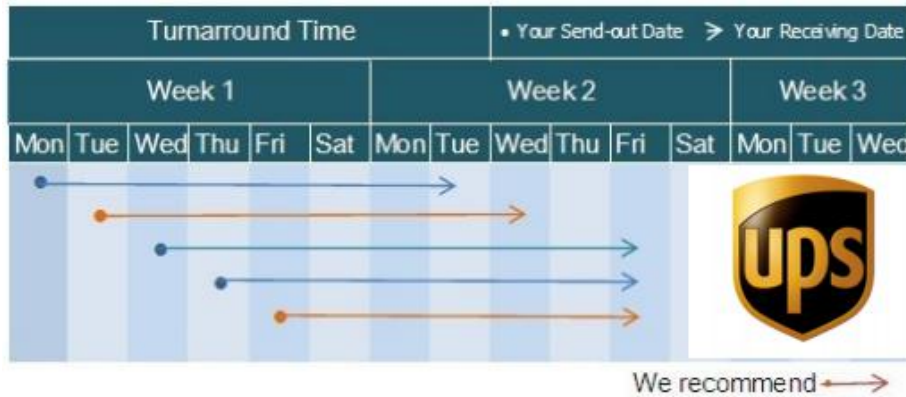
Website: www.wmdentallab.com
E-mail: info@wmdentallab.com

3D Printing Model



Data reception: Supports@wmdentallab.com

Shipping and Turnaround Time Schedule




SHENZHEN WANMEI DENTAL LABORATORY CO., LTD.

5/F, Building3, Goldstar Industrial Park, Jian' an Road,
Fuhai Street, Baoan District, Shenzhen, China 518103
Tel: +8675529760054
Email: info@wmdentallab.com

HK FIRTCHOICE DENTAL LAB CO., LIMITED

Unit 1402B 14/F THE BELGIAN BANK BLDG NOS 721-725 NATHAN RD MONGKOK
Tel: +8675529760054
Email: info@wmdentallab.com

